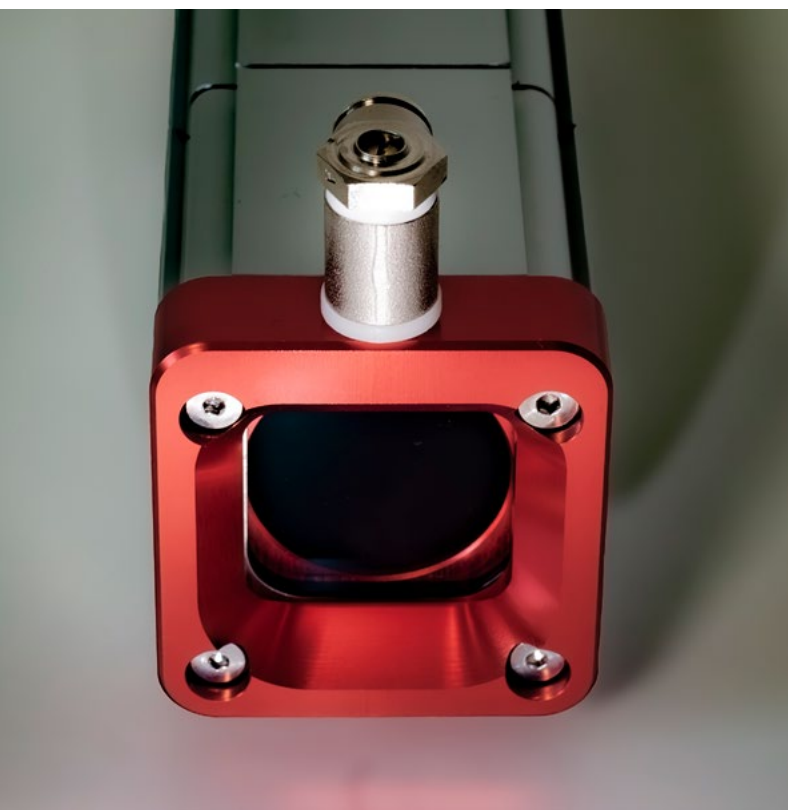


PRODUCT DATA SHEET

AIR BLOW
for **CH50**

 **argutec**[®]
have a vision





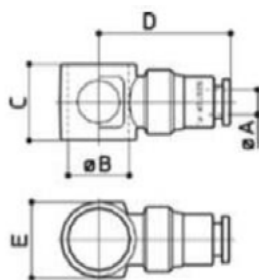
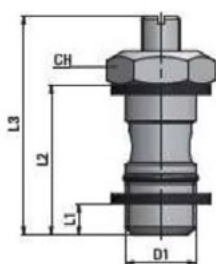
Air blow for enclosures CH50

Dust, debris, and grease are major obstacles to a clear and reliable image from industrial cameras – especially in demanding environments. That's why a simple yet highly effective air-blow system has been developed for the CH50 camera housing. This compact add-on enables a directed airflow across the front glass of the housing, effectively removing impurities and keeping the field of view clean. The system is equipped with a throttle valve adjustable between 1–10 bar and a 4mm push-in air inlet, making it easy to integrate into existing pneumatic setups. An elegant solution for anyone who refuses to compromise between equipment protection and image quality.

Simple, robust,
and durable



Easy to install
and secure in place



D1	L1	L2	L3 max	CH	g
M5x0,8	4	16	25	8	5

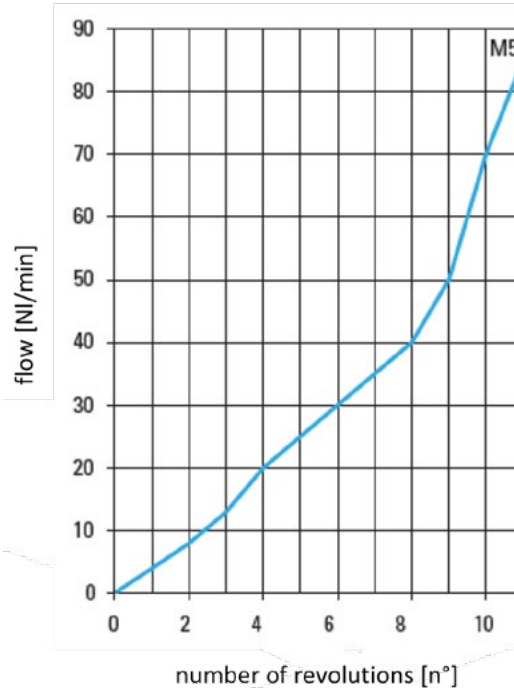
A	B	C	D	E	GR
4	5,2-M5	9	19	9	8



Air-blow system

Mounting kit

CH50 housing



Material properties

Body	Anodised Aluminium
Throttle valve	Nickel plated brass
Seal of throttle valve	NBR

Dimensions, environment

External dimensions	50 x 72 x 34 mm	Hole for push-in pipe air supply	Ø 4 mm
Throttle valve thread	M5x4	Tightening torque for M5	1,5 Nm

Argutec, s. r. o.

Na Nivách 1339/4
700 30 Ostrava-Zábřeh
Czech Republic

www.argutec.eu