

Industrial camera cover CH87 – User manual v1

Installing the camera in the camera cover

1) Removing the front part of the camera cover

Remove the four screws to remove the front part. You will not be able to slide out the front part because the heavy-duty seal has stuck to the hollow profile. To slide it out, first use a flat screwdriver as a lever between the front and rear parts of the profile at the center seal, see Figures 1 and 2 – Loosening the center seal.

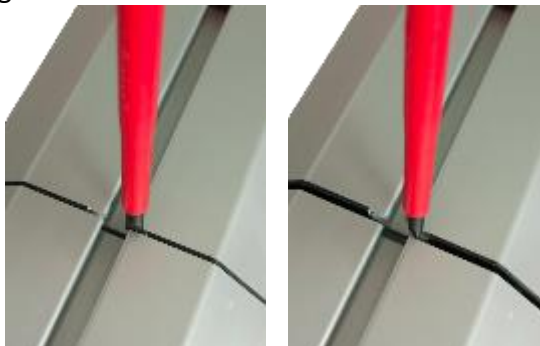


Figure 1 and 2- Loosening the center seal

Once the front section has been loosened, you can slide it out of the guide rods, see Figure 3 – Dismantling the front part.

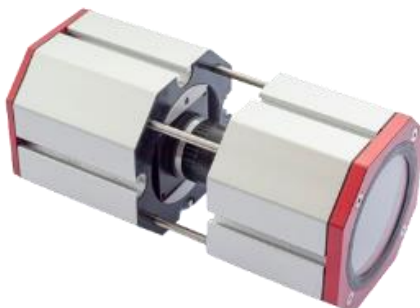


Figure 3 - Dismantling the front part

2) Mounting the camera

For mounting the camera inside the cover, use the included mounting plates creating a **spacer** and included screws.

Attach the lower fixed part of the spacer to the camera. The camera is screwed only to the front 2 screws for proper centering inside the housing. **Do not use double-sided adhesive tape! This would break the thermal bridge and cause future poor heat dissipation from the camera.** If the mounting holes in the bottom pad do not match the mounting holes in the camera, drill new holes. We will also prepare atypical mounting holes for you in advance, which is why we ask about the exact type of camera. Place the top of the spacer and insert it on the guide rods as shown on Figure 4. We also recommend dismantling the back of the cover (like the front) to lock the camera to the exact position by holding it from the back. Insert the camera into the rear of the camera cover to the required distance (Figure 4 –) and lock with the screw A.

By screwing screw A, the upper spacer will open, which will fix the camera in the exact position with firm pressure and ensure the proper heat dissipation from the camera into the body of the cover.

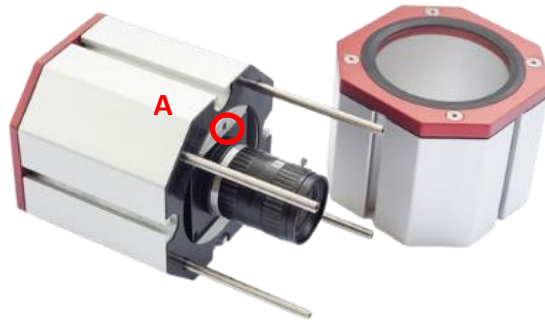


Figure 4 – Mounting the camera

3) Mounting the front of the camera cover

Make sure that you have the camera lens properly set and that it is at the correct distance behind the front glass before mounting the cover. If the camera with the lens is extended too far, the lens may not fit into the front part of the cover. Vice versa, if it is not extended enough, reconfiguration of the lens may be more difficult and require re-extending the camera. Slide the front of the camera cover onto the guide bars and secure by screwing the screws to a torque of **2-3 Nm**. Do not use a higher tightening torque, as this would result in deformation of the EPDM profile seal and loss of the IP protection.

Use the reverse procedure when dismantling.

Connecting cables

The cables can be installed either during the camera installation itself or subsequently by unscrewing the rear plate of the camera cover for easy access to the rear of the camera.

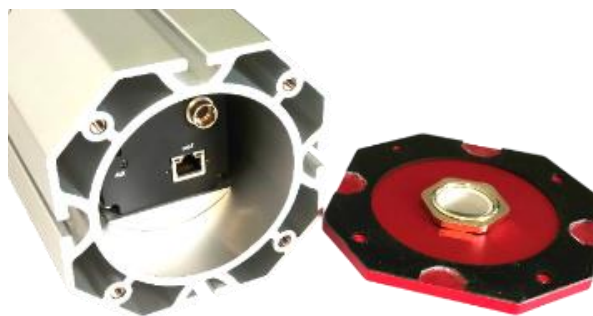


Figure 5 – Removing the rear plate of the cover

The cable gland allows installation of two 5-7 mm diameter cables. If you use only one cable, use the included blind seal in the second hole. **Attention! The Ø 7mm seal is longer than the insert itself. The Ø 7mm seal must be inserted at least 5 mm over the insert's edge on the both sides! Subsequently, it is necessary to tighten the nut of the cable gland as much as possible. If the Ø6mm seal does not protrude from both sides of the insert, over time it will be pushed out of the housing or inside the housing and the IP protection will be violated!**



Figure 6 –Correct and incorrect sealing of the insert before tightening the cable gland

How to install the cables:

- Unscrew the cable gland nut and thread it on the cables.
- Install the sealing ring and pass through the gland.
- Connect the cables to the camera connectors and screw in the gland nut.
- If you dismantled the rear plate, install it back.

Lens adjustment

To adjust the aperture or focus of the lens, it is necessary to dismantle the front of the cover according to the procedure in „Installing the camera in the camera cover “. After setting the lens, install the front cover back to position.

Installation of the camera cover

To install the camera cover, use the 2 slotted nuts with M8 screws in the T-slot provided. The T-slot is compatible with aluminum profile systems (e.g., ITEM, BOSH).

Maintenance

The enclosure is designed for industrial premises and is intended to protect the camera. Aluminum parts need not be kept clean. If necessary, use a damp cloth to clean. Do not use aggressive cleaning substances that could damage the seal. **Do not use alcohol-based products on the CH50.DIA50.PMMA window, as this will cause the PMMA glass to crack.**

For the correct operation of the camera, it is necessary to keep the cover glass clean. Blow dust with compressed air or use a damp cloth. Prevent glass from getting dirty by positioning the cover appropriately when installing it.

Repairs

Do not repair the cover or individual parts. Surface scratches on aluminum do not affect the properties of the cover. If the cover, glass, or any of the seals are mechanically damaged, its

properties will be lost. Do not use the damaged cover. In case of repair of the cover, contact the manufacturer

Disposal

Dangerous substances were not used during the production of the cover. Hand over the cover for disposal in any collection yard.

Technical specifications

Material properties	
Body	Anodised aluminium
Seal	EPDM
Glass CH87.DIA83	H-K9L (N-BK7 equivalent) anti-reflection coating MgF2 (standard 390~700 nm)
Glass CH87.DIA87	PMMA (standard 390~700 nm)
Cable gland	Nickel-plated brass, NBR

Dimensions, environment	
External dimension	Cross section 120 x 120 mm, length individual
Internal dimension	Ø 87 mm
Window CH87.DIA83	Ø 83 mm
Window CH87.DIA87	Ø 87 mm
Protection class	IP69
Weight	2,5 kg

Manufacturer, Country of origin

Country of origin: Czech Republic
Argutec, s.r.o.
Na Nivach 1339/4
700 30 Ostrava-Zabreh
Czech Republic

