

INDUSTRIAL CAMERA HOUSING **CH50**

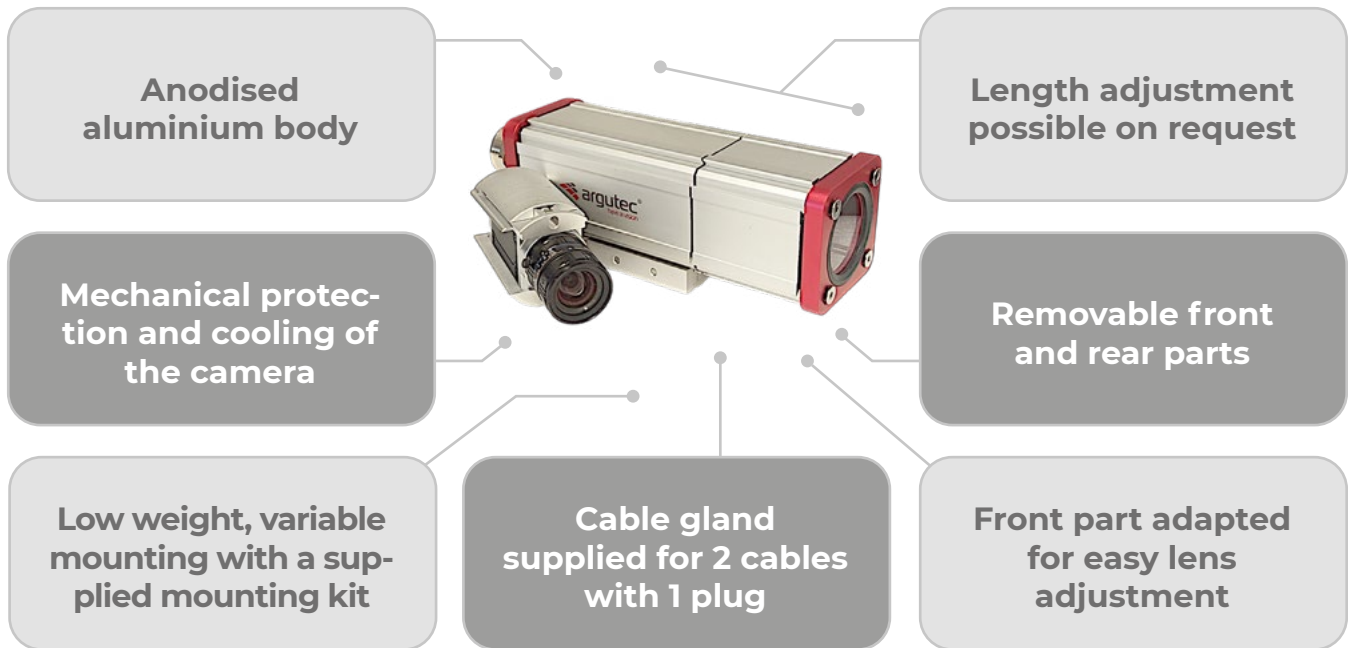
 **argutec**[®]
have a vision





CH50 industrial camera housing

The CH50 industrial camera housing is perfect for machine vision systems in industry. With an IP69 rating, it provides reliable protection. Its aluminium body combines strength with modern design. With customisation and extension options, it offers flexibility for different applications. Easy operation and versatile use make this housing the optimal choice for industrial applications.



Material properties

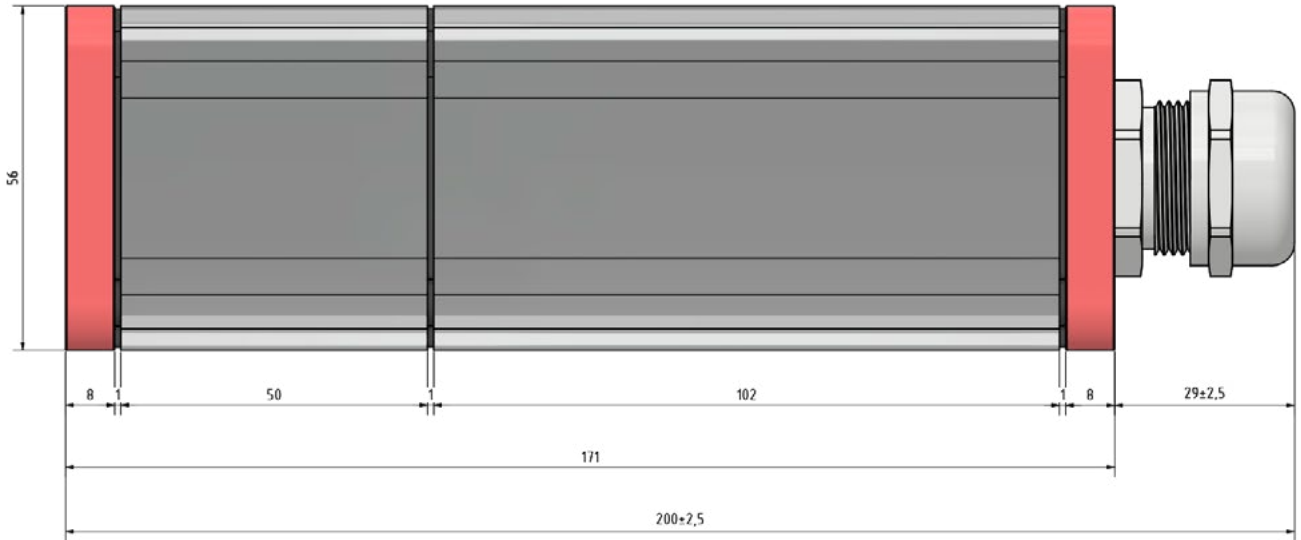
Body	Anodised aluminium
Seals	EPDM
Cover glass of CH50.DIA35	H-K9L (equivalent to N-BK7 borosilicate), MgF2 anti-reflective coating (standard transmittance 390~700nm)
Cover glass of CH50.DIA50	PMMA
Cable gland	Nickel plated brass, NBR
Mounting kit	Anodised aluminium

Dimensions, environment

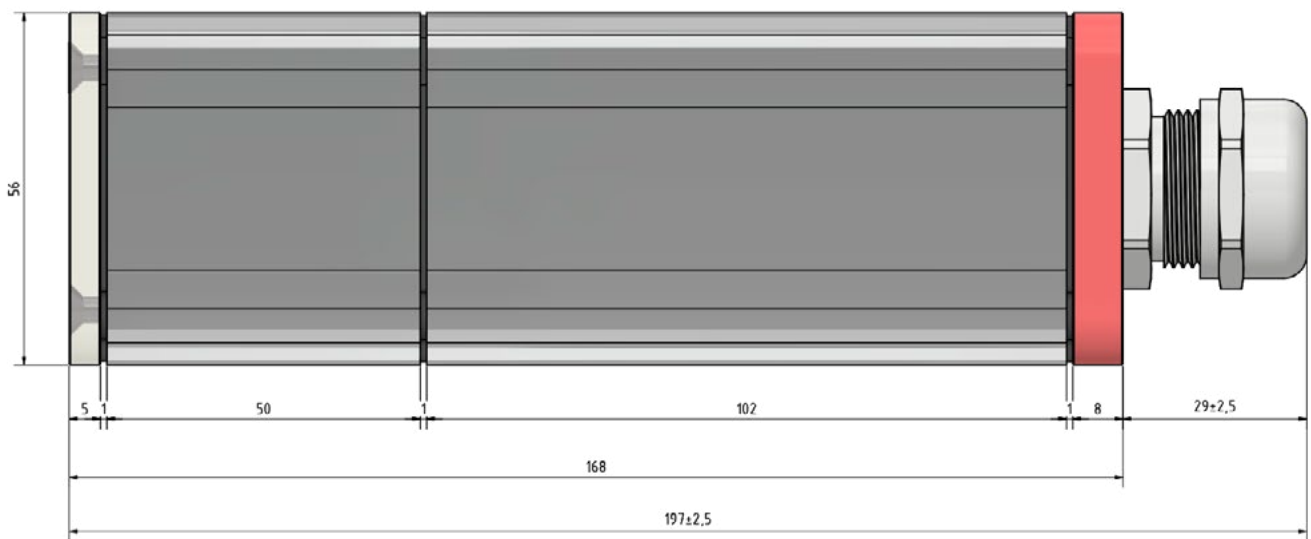
External dimensions of CH50.DIA35	Cross section 56 x 56 mm, length 200 ± 2.5 mm including a cable gland
External dimensions of CH50.DIA50	Cross section 56 x 56 mm, length 197 ± 2.5 mm including a cable gland
Internal dimensions	Ø 50 mm
Cover glass of CH50.DIA35	Vision aperture Ø 35 mm
Cover glass of CH50.DIA50	Vision aperture Ø 50 mm
IP rating	IP 69
Weight	600 g including a spacer and mounting kit

Product dimensions

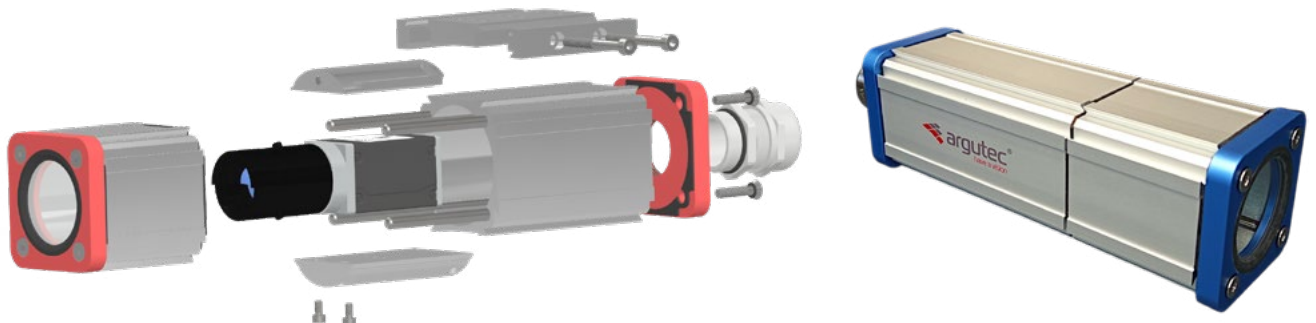
Standard dimensions of the **CH50.DIA35** housing



Standard dimensions of the **CH50.DIA50** housing



3D model and photos of the **CH50** housing

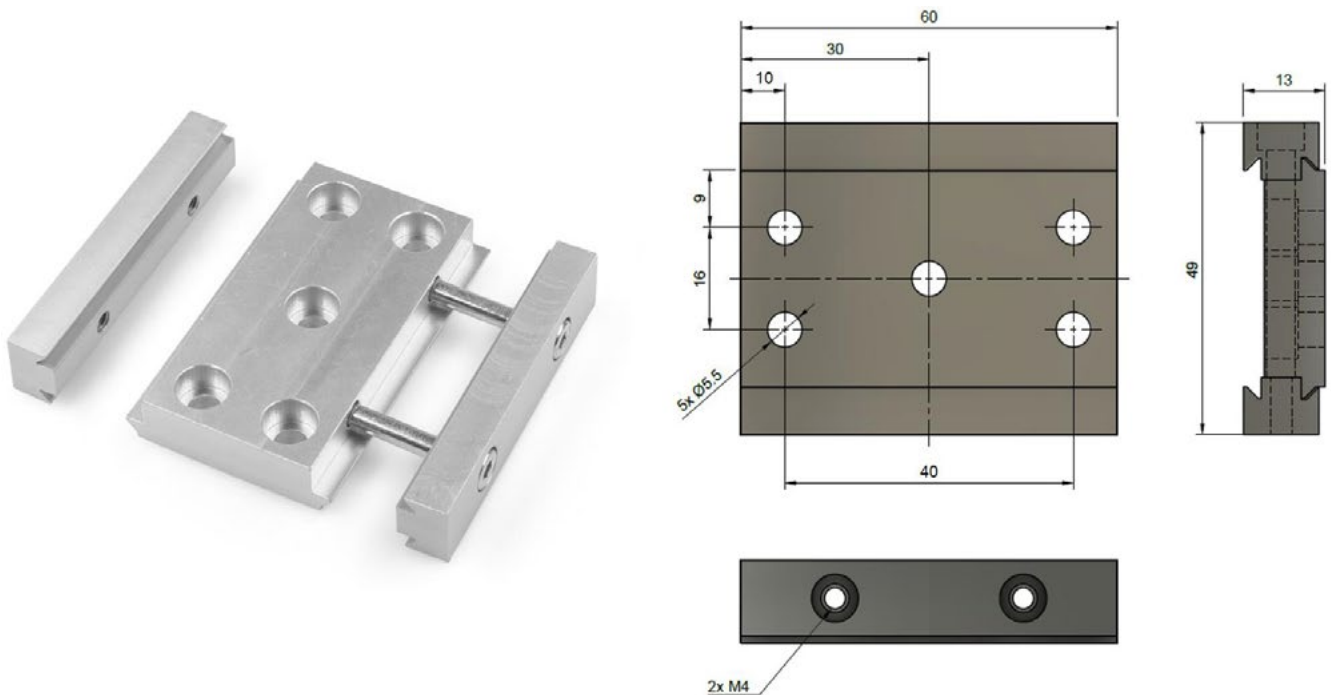


Supplied accessories

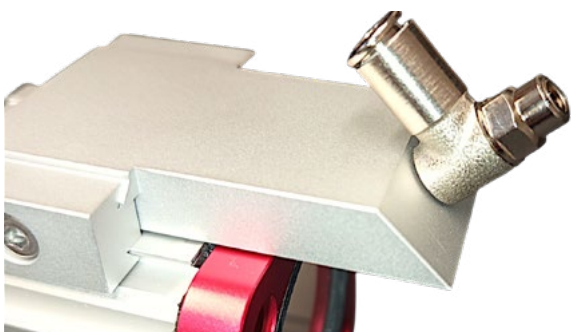
1. Cable gland with an insert for 2 cables \varnothing 4–6 mm and plug for one cable. Possibility of cutting to insert a cable with connectors.
2. Spacer for mounting the camera.
3. 2x screw M2x6 DIN 912, 2x screw M3x6 DIN 912 for fixing the camera to the lower camera mount.
4. Camera housing mounting kit.

Mounting kit

Easy mounting of the housing thanks to ready-made mounting holes in the base for screws up to M5.



Accessories (not included in the standard package)



Simple air blow-off.

BLOW-OFF CH50



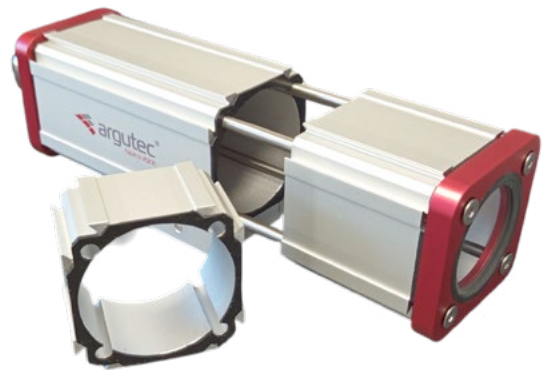
Articulated holder for easy handling.

HOLDER UU2

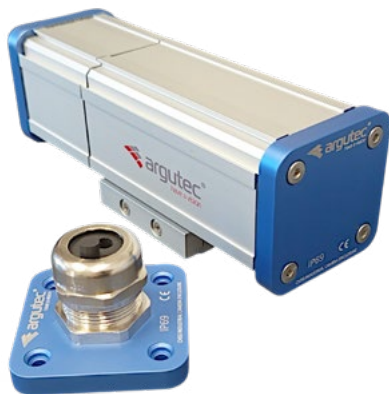
Atypical product options



Atypical length



Additional extension



The rear housing can be ordered without a gland hole



Left – Additional slots for a camera (29 x 44 mm)
Right – Different inserts for cables



Custom logo



Left – Different layout of holes in the mounting plate
Right – Mounting plate for different camera size



Defrosting



Colour variants

Argutec, s. r. o.

Na Nivách 1339/4
700 30 Ostrava-Zábřeh
Czech Republic

www.argutec.eu